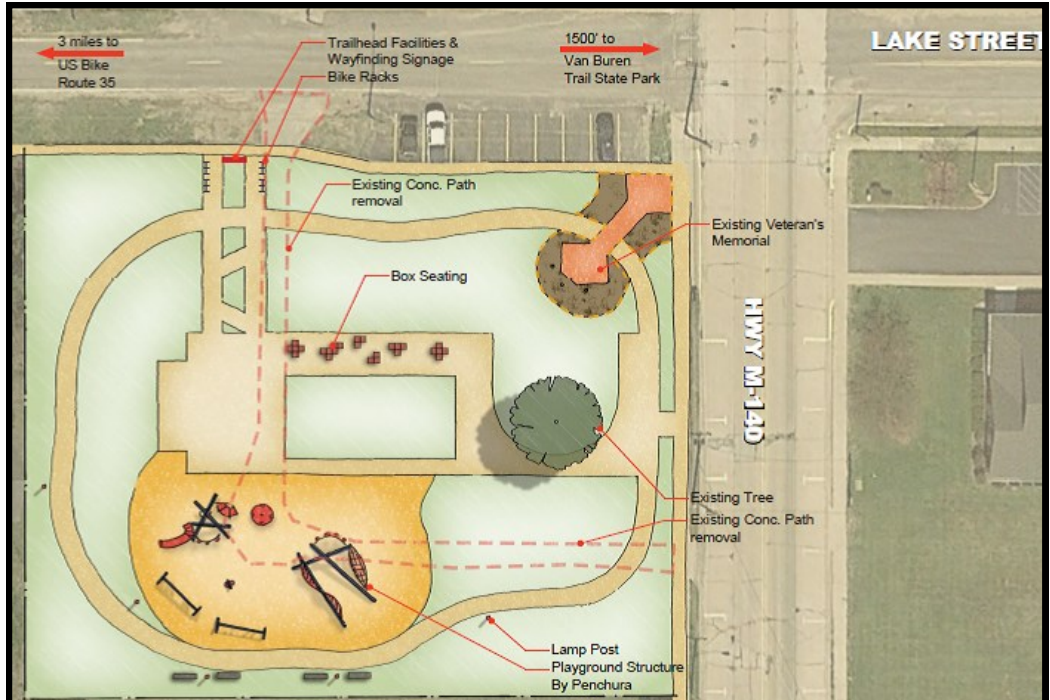


DONATE to the NEW Bicentennial Park & Trailhead

Show your support and be a part of a legacy in Covert Township



The previous Bicentennial Park served as a neighborhood playground to local residents for decades. Time and wear caused the play equipment to be removed in February of 2017. The NEW Bicentennial Park and Trailhead will be located on the southwest corner of 34th Ave and M-140 and feature*:

- "Community-led" design.
- Recycled benches and receptacles.
- Near Van Buren Trail to connect communities.
- Space for public gathering.
- Wide ADA compliant paths.
- High and open visibility to ensure safety.
- Trailhead facilities, such as bike rack and drinking fountain.
- Nearly double the size of previous location.
- Play structures with ADA compliant safety surface.
- Dusk 'til dawn energy-efficient lighting.
- Wayfinding signage.
- Central location near K-12 Public School and Public Housing.

**Design features are subject to change based on funding and community input.*

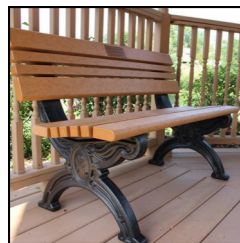
THREE WAYS TO DONATE:

(1) online donation at ioby.org **(2)** in-person donation at Covert Township Hall **(3)** Donate-a-Bench Program



Visit ioby.org/project/covert to donate online today!

ioby is a "crowd-resourcing" platform that directly connects individuals to community-led, neighbor-funded projects.



Our "DONATE A BENCH" program can be used to promote local businesses and organizations, memorialize loved ones and contribute to your community. Call or visit us online for more information.

This project is supported by the Covert Township Board of Trustees. All funds collected will be used for the Bicentennial Park and Trailhead development. Extra funds will be allocated toward future Covert Township park developments. Donations are TAX DEDUCTIBLE.

Questions? Contact the Township Clerk, Daywi Cook at (269) 764-8986 Ext 2 | clerk@coverttwp.com

VISIT www.coverttwp.com/local/parks